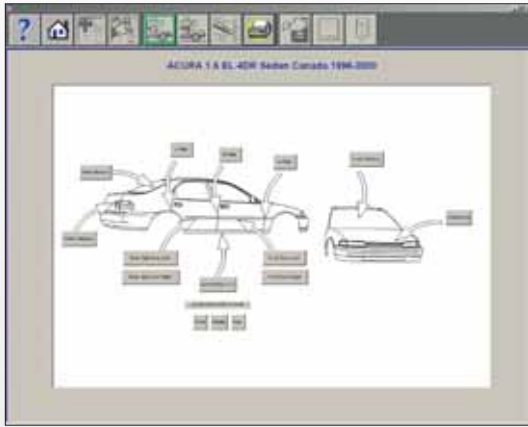


BLACKHAWK[®]

- **ESTIMATING**
- **ANALYSIS**
- **REPAIR**



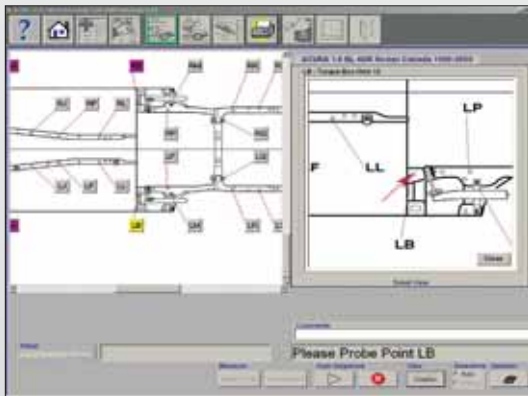
Quik-Chek[™]
Structural Diagnostic System



Quik-Check measures the entire vehicle, lower and upper body.



User interface offers simple point and click technology.



Detailed graphics aid operator at each step of the operation.



Easy to use hand-held probe

Innovative Blackhawk Technology in an affordable package



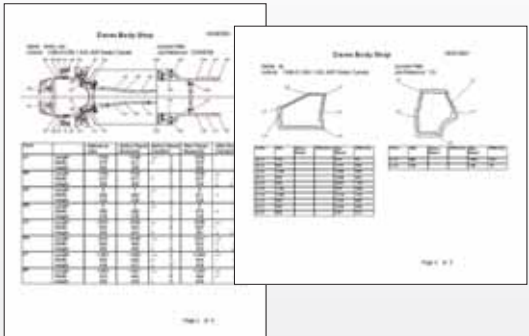
Camera articulates to achieve optimum measuring angle.

Easy to Learn, Easy to Use,

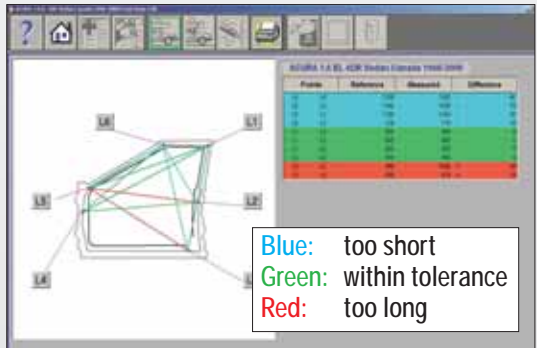
BLACKHAWK®



Easy to Own



Quik-Chek provides pre- and post-repair documentation required for Direct Repair Programs.



Deviation results are simple to read.



Hand-held probe performs free-form measuring at any point on the vehicle or components.



Minimal attachments required.

BLACKHAWK®

Quik-Chek™
Structural Diagnostic System



- Measures Upper Body as well as Under Body
- Provides Pre- and Post-Repair Documentation
- Shows Deviations from Factory Specifications
- Automated or Manual Sequence
- Detailed Graphics to Aid Technicians
- Limited Attachments Required
- Easy to Own... Easy to Setup... Easy to Use

Quik-Chek Profit Opportunities

Number of Vehicles Repaired Per Month	20
Number of Vehicles Requiring Measuring	15
Average Time Paid by Insurance Company	2 hrs.
Actual Time required to Measure	1/2 hr.
Additional Repair Time Found Measuring	2 hrs.
Total Time Gained	3 1/2 hrs.
Shop Rate per Hour	\$45
Profit Potential per Vehicle	\$157.50
Additional Profit	\$2,362.25

TAG™
Technical Automotive Group

877-4-TAGTOOL or 877-482-4866
www.TAG-Equipment.com